

# AI – Driven Circuit Performance Enhancement in Automotive Applications

**Robert van Veldhoven**, *NXP, Eindhoven, The Netherlands*

**Marco Fattori**, *Eindhoven University of Technology, Eindhoven, The Netherlands*



COMPANY CONFIDENTIAL



SECURE CONNECTIONS  
FOR A SMARTER WORLD

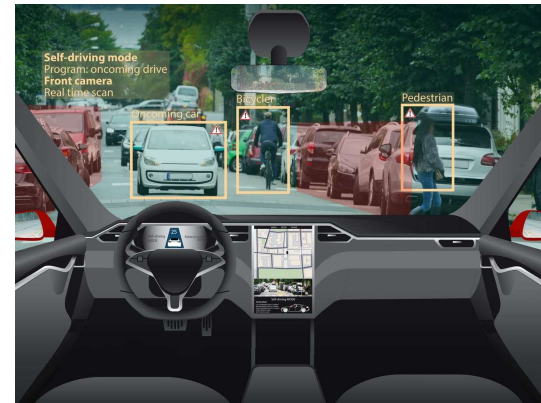
# Business rationale

---

- Strong European **automotive** industry & eco-system
- Electrification in cars demands more **sophisticated electronic systems**
- Automotive applications require more **functional safety**
- **AI & ML** can make systems **smarter** and **more reliable**, at **lower cost**



Bentley Bentayga electrification



Self-driving cars

# Technology rationale

---

- High performance on-chip electronics trend:

- Extremely complex

- Design is very time consuming



- Require large area

- Higher cost

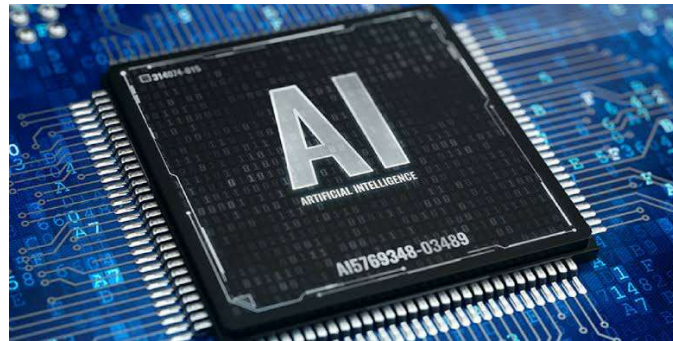


- Power hungry

- Supply and heat problems



**This project is going to break that trend!**



# Looking for partners!

---

- **Application requirements** (Reliability, Functional safety, Explainable AI, ...)
  - Automobile manufacturers & car module makers
- **IC design & validation** (AI – driven circuit performance enhancement)
  - Partners in electronic circuit **IC** design
  - Partners with AI & ML expertise
- **Demonstrator PCBs**
  - Partners specialized in PCB design
- **Testing of ICs** embedding AI functionalities (with adequate coverage)
  - Partners specialized in test of ICs

# Are you the right partner ?

---

- Vision driven
- Clear commitment
- To the point (descriptions, project meetings, ...)
- Let us make European subsidy money count !

## Contact us

---



### **Robert van Veldhoven**

Architect Data converters & Sensor interfaces  
Analog Mixed-Signal IP  
NXP Semiconductors  
email: [Robert.van.Veldhoven@NXP.com](mailto:Robert.van.Veldhoven@NXP.com)



### **Marco Fattori**

Assistant Professor  
Integrated Circuits (IC) group  
Department of Electrical Engineering  
Eindhoven University of Technology  
email: [M.Fattori@tue.nl](mailto:M.Fattori@tue.nl)



SECURE CONNECTIONS  
FOR A SMARTER WORLD